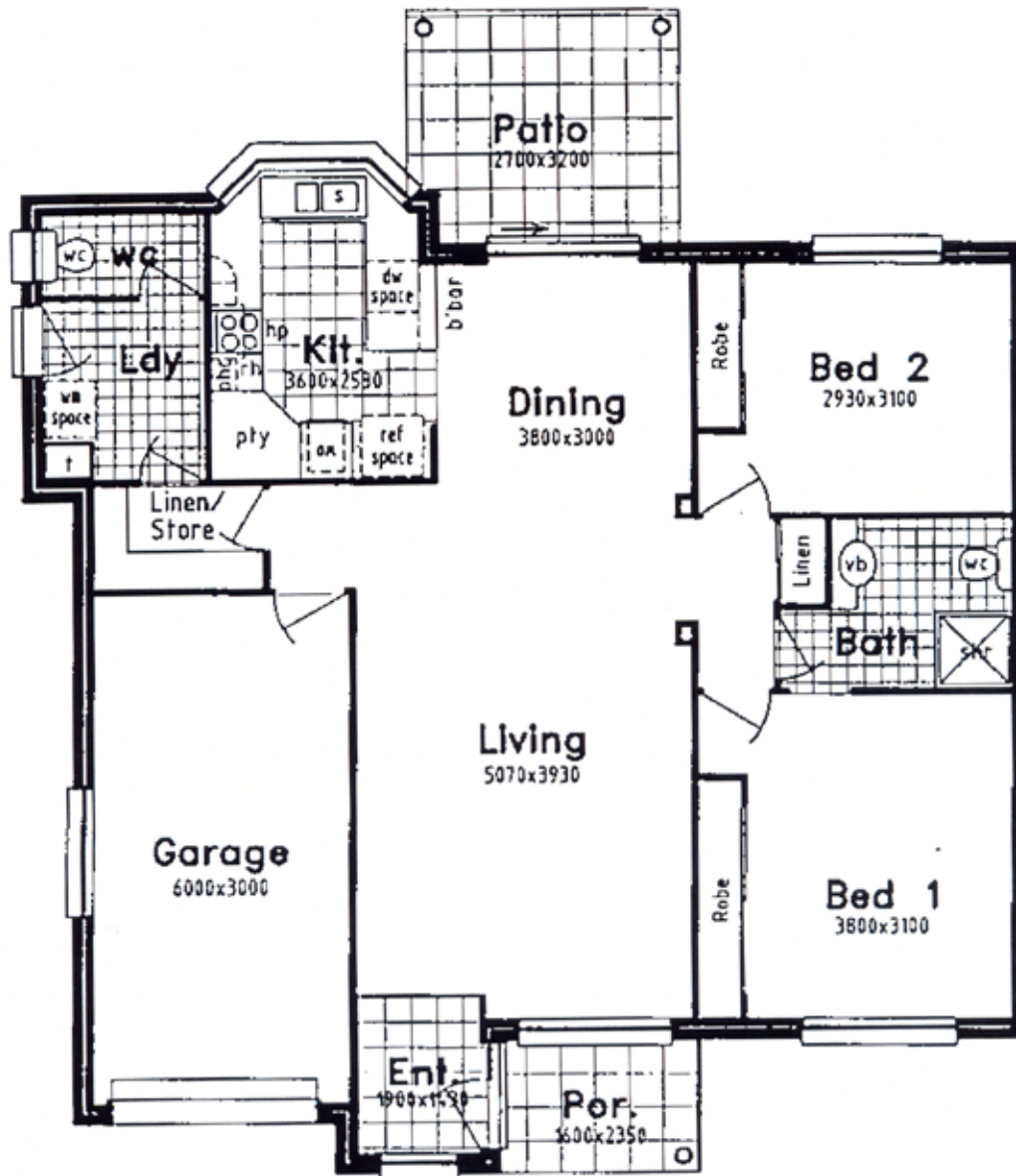


Plans & Specifications

The Bounty 1 Villa 3

- Two Bedrooms • Lockup Garage • Independent Living Villa



FLOOR PLAN Gross Floor Area 127.606m (13.73sq)

BED 1	3800*3100	12'5" * 10'2"	PORCH	1600*2350	5'3" * 7'7"
BED 2	2930*3100	9'6" * 10'2"	KITCHEN	3600*2530	11'8" * 8'3"
PATIO	2700*3200	8'9" * 10'5"	BATH	1800*2065	5'11" * 6'9"
DINING	3800*3000	12'5" * 9'9"	WC	930*1930	3'1" * 6'3"
LIVING	5070*3930	16'6" * 12'9"	LAUNDRY	2100*1930	6'6" * 6'3"
GARAGE	6000*3000	19'7" * 9'9"	LINEN	1230*500	6'9" * 1'7"
ENTRY	1900*1430	6'2" * 4'7"	ENSUITE	2000*2100	6'6" * 6'9"

Plans & Specifications

The Bounty 1 Villa 3

- Two Bedrooms • Lockup Garage • Independent Living Villa

Bedroom 1

- Variable speed ceiling fan
- Built-in robe, shelves, hanging rods
- Quality carpet
- Telephone socket
- TV point and power point
- Mirror fitted in cabinet / robe

Bedroom 2

- Ceiling fan
- Built-in robe, shelves, hanging rods
- Quality carpet
- Power points

Living / Dining

- Variable speed ceiling fan
- Quality carpet
- Linen cupboards
- Telephone socket
- Television antennae socket
- Feature cornice

Kitchen

- Stainless steel sink with flick mixer
- one and half bowl
- Built-in cupboards
- Pantry cupboard, many drawers
- Dishwasher - drawer type
- Quality wall oven and hot plates
- Quality floor tiles
- Down light over sink area
- Slim-line exhaust fan
- Microwave position

Bathroom

- Vanity unit and basin
- Shower with flexible hand set
- Powder coated shower screen
- Ceramic wall and floor tiles to wet areas
- Mirror
- WC
- Quality flick mixer taps
- IXL Exhaust fan and heater light
- Support rails

Patio and Porch

- Entrance porch / paved / tiled
- Tiles to patio
- Ceiling lights fitted to patio and porch
- Weatherproof power point

Garage

- Lock up panel lift door with remote control
- electrically operated
- 35 watt fluorescent light

Laundry

- Stainless steel wash tub
- Bench and cupboards

Site Landscaping

- Intensive landscaping to front and all areas
- Automatic irrigation
- Fold-down clothes line
- Two hose taps

General Items

- VAC maid plumbed
- All walls finished in quality finish paint
- All ceilings finished in quality finish paint
- Sliding powder coated aluminium windows
- Doors, architraves and skirting
with gloss enamel paint finish
- All windows fitted with key locks
- Quality internal doors
- Solid front door and lead light
side panel where applicable
- Smoke detector-mains plus battery back-up
- Wired and plumbed for air conditioning
- Emergency call system

Store / Linen

Second Toilet