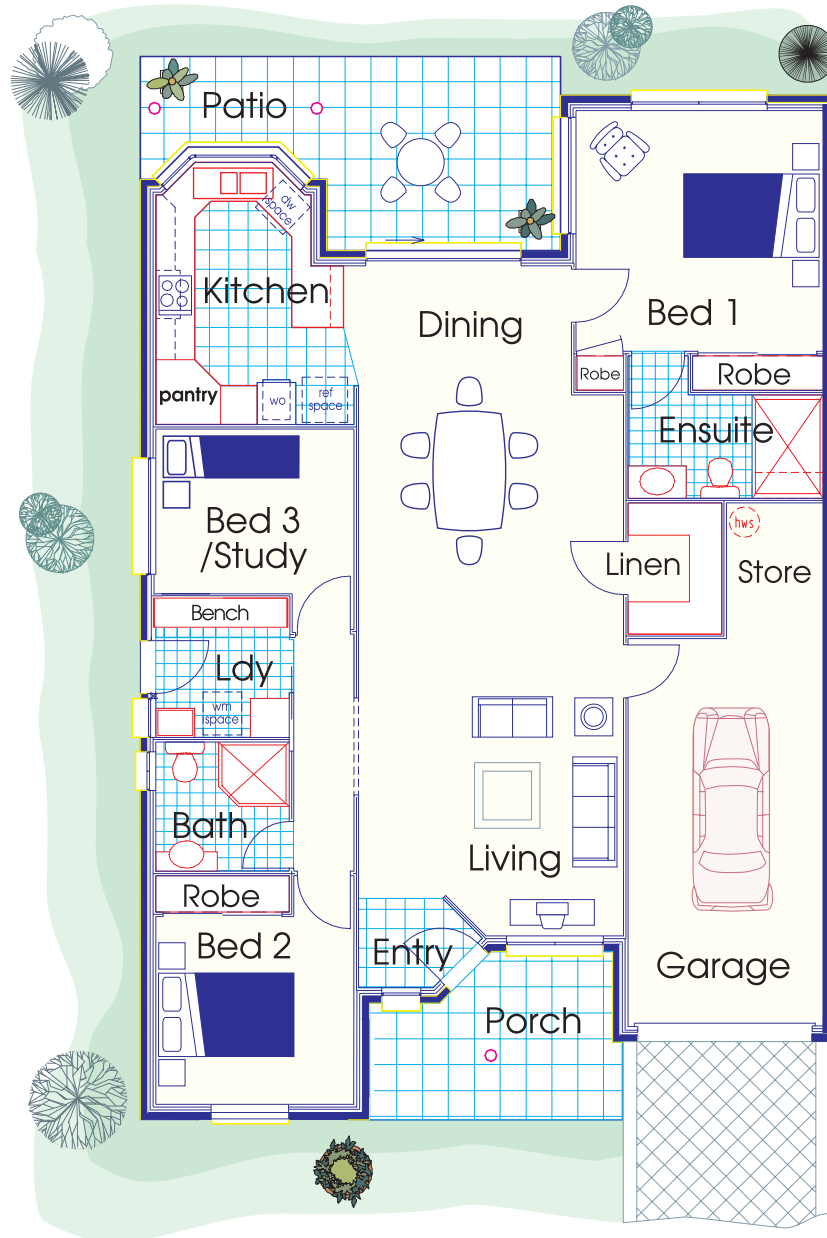


# Plans & Specifications

## The Endeavour 3

Villas 26, 31, 34, 35, 39, 42, 46, 47 & 55

- Two Bedrooms & Study
- Lockup Garage
- Ensuite & Bathroom
- Independent Living Villa



### Gross Floor Area 168.323m<sup>2</sup> (18.12sq)

BED 1	3720*3825	12'2" * 12'5"	PORCH	2300*3760	7'5" * 12'3"
BED 2	2900*3065	9'5" * 10'	KITCHEN	4050*3065	13'3" * 10'1"
PATIO	3000*6500	9'8" * 21'3"	LAUNDRY	2000*2065	6'6" * 6'8"
DINING	4260*4100	13'9" * 13'4"	BATHROOM	2000*2065	6'6" * 6'8"
LIVING	6100*4100	20' * 13'5"	STUDY/BED 3	2700*3065	8'9" * 10'
GARAGE	6000*3020	19'6" * 9'9"	LINEN	2100*1450	6'9" * 4'8"
ENTRY	1300*1300	4'3" * 4'3"	ENSUITE	1600*3020	5'2" * 9'9"
STORE	2100*1500	6'9" * 4'9"			

# Plans & Specifications

## The Endeavour 3

Villas 26, 31, 34, 35, 39, 42, 46, 47 & 55

- Two Bedrooms & Study • Lockup Garage • Ensuite & Bathroom • Independent Living Villa

### Bedroom 1

- Variable speed ceiling fan
- Built-in robe, shelves, hanging rods
- Quality carpet
- Telephone socket
- TV point and power point
- Mirror fitted in cabinet / robe

### Ensuite

- Shower with flexible hand set
- Vanity unit and marble integrated basin
- Support rails built into walls
- Wall mounted mirror
- Wall mounted cabinet
- Powder coated shower screen and laminated glass
- Quality flick mixer taps
- IXL Exhaust fan and heater light
- Ceramic wall and floor tiles to wet areas, 1800mm to shower

### Bedroom 2

- Variable speed ceiling fan
- Built-in robe
- Shelves and hanging rods
- Quality carpet
- Power points

### Main Bathroom

- Vanity unit and basin
- Shower with flexible hand set
- Powder coated shower screen and laminated glass
- Ceramic wall and floor tiles to wet areas
- Wall mounted mirror
- WC
- Quality finished flick mixer taps
- IXL Exhaust fan and heater light
- Support rails

### Living / Dining

- Variable speed ceiling fan
- Quality carpet (Villa 35 tiled)
- Linen cupboards
- Telephone socket
- Television antennae socket
- Feature cornice

### Study

- Quality carpets
- Ceiling fan

### Kitchen

- Stainless steel sink with flick mixer - one and half bowl
- Built-in cupboards
- Pantry cupboard, many drawers
- Dishwasher - drawer type
- Quality wall oven and hot plates
- Quality floor tiles
- Down light over sink area
- Slim-line exhaust fan
- Microwave position

### Garage

- Lock up panel lift door with remote control - electrically operated
- 35 watt fluorescent light
- Varie-coat flooring

### Patio and Porch

- Entrance porch / paved / tiled
- Tiles to patio
- Ceiling lights fitted to patio and porch
- Weatherproof power point

### Laundry

- Stainless steel wash tub
- Bench and cupboards

### Site Landscaping

- Intensive landscaping to front and all areas
- Automatic irrigation
- Fold-down clothes line
- Two hose taps

### General Items

- VAC maid plumbed
- All walls finished in quality finish paint
- All ceilings finished in quality finish paint
- Sliding powder coated aluminium windows
- Doors, architraves and skirting with gloss enamel paint finish
- 250 litre hot water system
- All windows fitted with key locks
- Quality internal doors
- Solid front door and lead light side panel where applicable
- Smoke detector-mains plus battery back-up
- Wired and plumbed for air conditioning
- Emergency call system

### Store / Linen