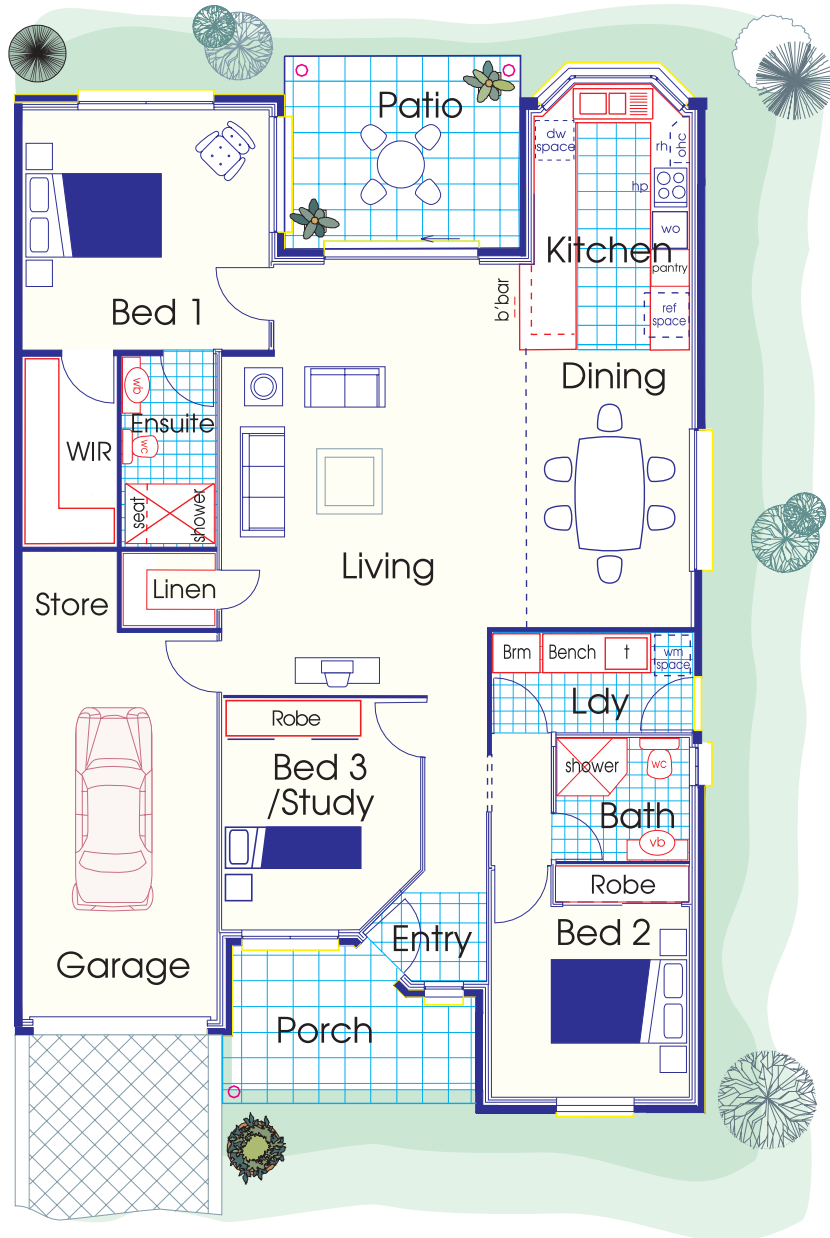


Plans & Specifications

The Endeavour 5 Villa 71

- Two Bedrooms & Study
- Lockup Garage
- Independent Living Villa



Gross Floor Area 167.831m² 18.05 squares

Bed 1	3825 X 3720	12'6" X 12'2"	Porch	4150 X 2600	13'7" X 8'6"
Bed 2	3065 X 2900	10'1" X 9'6"	Entry	1910 X 1370	6'3" X 4'6"
Bed 3/Study	2400 X 3270	7'10" X 10'9"	Kitchen	2400 X 4650	7'10" X 15'3"
Patio	3620 X 3000	11'11" X 9'10"	Laundry	3065 X 1530	10'1" X 5'0"
Living	4100 X 5870	13'5" X 19'3"	Bath	2065 X 2000	6'9" X 6'7"
Garage	3020 X 6000	9'11" X 19'8"	Dining	4765 X 4490	15'8" X 14'9"

The Endeavour 5 Villa 71

- Two Bedrooms & Study • Lockup Garage • Independent Living Villa

Bedroom 1

- Variable speed ceiling fan
- Built-in robe, shelves, hanging rods
- Quality carpet
- Telephone socket
- TV point and power point
- Mirror fitted in cabinet / robe

Bedroom 2

- Ceiling fan
- Built-in robe, shelves, hanging rods
- Quality carpet
- Power points

Bedroom 3 / Study

- Ceiling fan • Power points
- Built-in robe • Quality carpet
- Shelves and hanging rods

Living / Dining

- Variable speed ceiling fan
- Quality carpet
- Linen cupboards
- Telephone socket
- Television antennae socket
- Feature cornice

Kitchen

- Stainless steel sink with flick mixer - one and half bowl
- Built-in cupboards
- Pantry cupboard, many drawers
- Dishwasher - drawer type
- Quality wall oven and hot plates
- Quality floor tiles
- Down light over sink area
- Slim-line exhaust fan
- Microwave position

Patio and Porch

- Entrance porch / paved / tiled
- Tiles to patio
- Ceiling lights fitted to patio and porch
- Weatherproof power point

Store / Linen

Bathroom

- Vanity unit and basin
- Shower with flexible hand set
- Powder coated shower screen and laminated glass
- Ceramic wall and floor tiles to wet areas
- Wall mounted mirror
- WC
- Quality finished flick mixer taps
- IXL Exhaust fan and heater light
- Support rails

Garage

- Lock up panel lift door with remote control - electrically operated
- 35 watt fluorescent light

Laundry

- Stainless steel wash tub
- Bench and cupboards

Site Landscaping

- Intensive landscaping to front and all areas
- Automatic irrigation
- Fold-down clothes line
- Two hose taps

General Items

- VAC maid plumbed
- All walls finished in quality finish paint
- All ceilings finished in quality finish paint
- Sliding powder coated aluminium windows
- Doors, architraves and skirting with gloss enamel paint finish
- All windows fitted with key locks
- Quality internal doors
- Solid front door and lead light side panel where applicable
- Smoke detector-mains plus battery back-up
- Wired and plumbed for air conditioning
- Emergency call system